

K6-F13D

- Full Aluminium Fanless Design
- Unique Patented Appearance
- Dual Display HDMI+VGA
- Stable Performance, Work for 7/24
- Support PXE Boot/Wake on lan



Specification



ISO9001

ISO14001

Parameter list

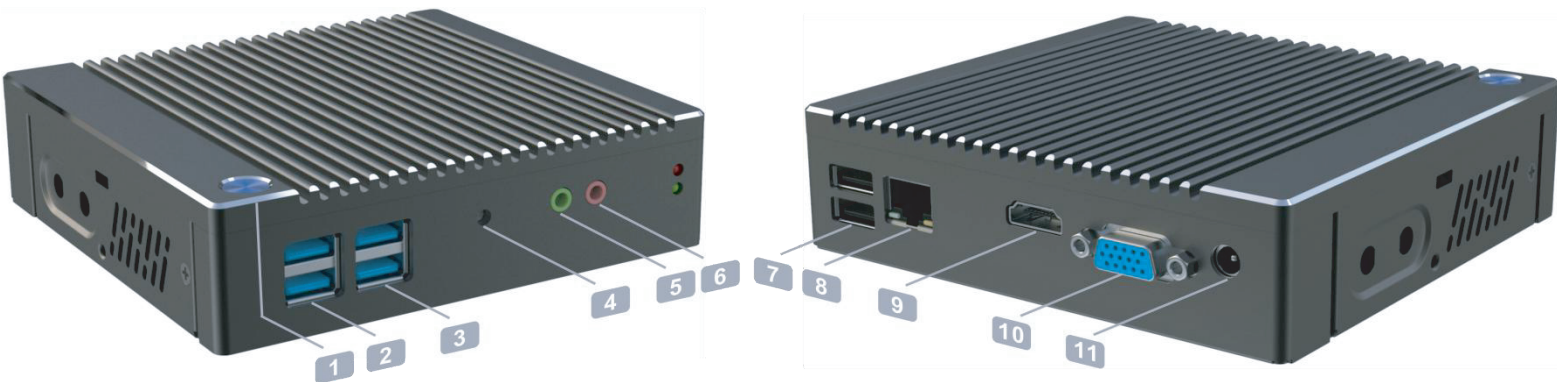
CPU	Intel® Pentium® Processor N3710 1.60GHz - 2.56GHz
Cores	4 Cores
Threads	4 Threads
Cache	2 MB L2 Cache
TDP	6W
Chipset	Products formerly Braswell
RAM	DDR3L 4G /8G
Storage	SSD (mSATA pcie) +HDD(SATA)
Audio	High Definition Audio
Graphics	Intel® HD Graphics 400MHz
Network	10/100/1000M Adaptive
Extendable	WIFI+BT
OS Supporte	Windows (Not include XP)& Linux



BIOS	Boot Mode	Power On / PXE / Wake-on-LAN
	Virtualization	VT-X
	Hyper-Threading	NO

Environmen	Working Temperature	-10 - 60°C
	Environment Temperature	-20 - 70°C
	Operating Humidity	5% - 85% (non-condensing)
	Static	Direct Contact: 2K,Air Discharge:6K
	Operating Voltage	12V - 5A
	Optional Bracket	Vesa Mount
	Radiation Method	Passive Cooling

Dimension & I/O



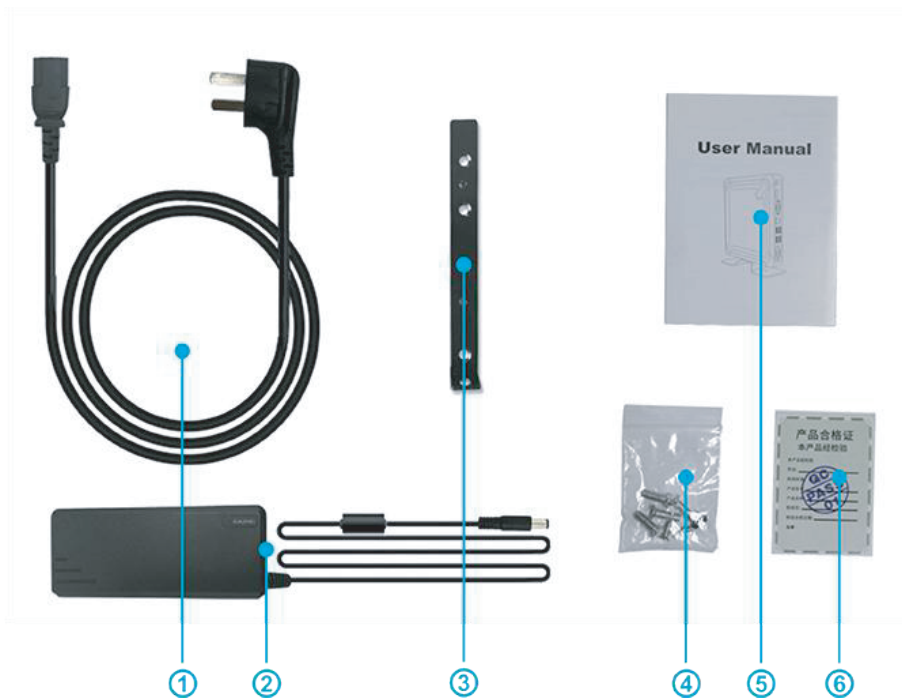
Dimension	A	134 mm
	B	36.5 mm
	C	126 mm

I/O	①	POWER
	②	USB3.0*2
	③	USB3.0*2
	④	RESET

I/O

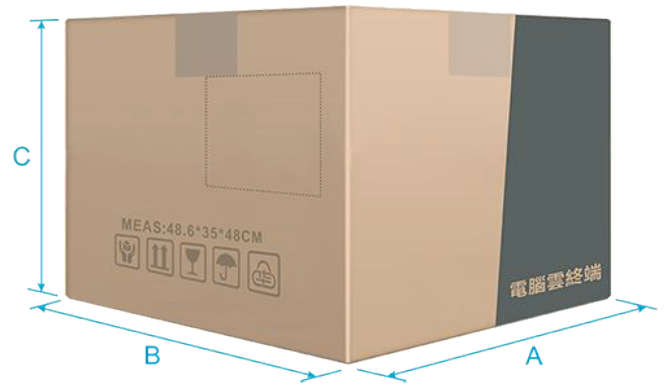
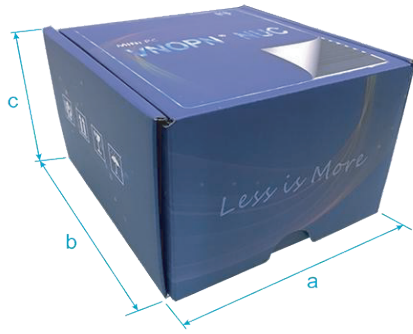
⑤	1/8"(3.5mm)SPK
⑥	1/8"(3.5mm)MIC
⑦	USB2.0*2
⑧	Giga RJ45 LAN
⑨	HDMI output
⑩	VGA output
⑪	DC12V input

Accessories



Accessories	①	Power Line
	②	Power Adapter
	③	Bracket
	④	Screws
	⑤	Manual
	⑥	Certification of Approval

About Packing



Packing Box	a	157 mm
	b	150 mm
	c	97 mm
Packing Carton	A	486 mm
	B	480 mm
	C	350 mm
Weight	Product Weight	0.65 kg
	Gross Weight	1.50 kg

About Bracket



Bracket

VESA Mount