

IPC-805A

Industrial Box PC with Intel
6th 7th Celeron/Core i3 i5 i7 Processor



Features

- Intel 6th 7th Gen Celeron 3865U/Core i3 i5 i7 Processor
- System memory up to 16GB DDR4
- 2x HDMI Dual Independent Display
- Fanless design and low power consumption
- Supports SATA 2.5inch HDD and 1x mSATA socket
- Supports Win 7/ Win 8/ Win 10/ Linux OS

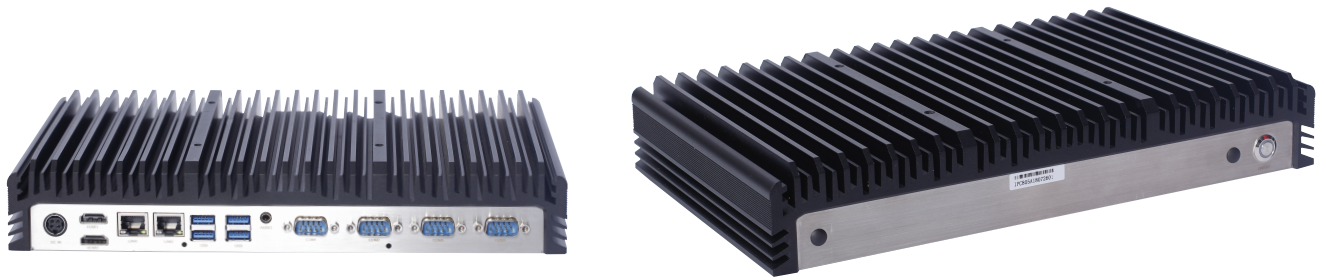
Introduction

IPC-805A is a new, industrial box PC equipped with an Intel® 6th 7th Gen Celeron/Core i3 i5 i7 processor. Meeting the demands of harsh environments, the fanless design makes the IPC-805A extra reliable for applications in the machine building industry. In addition, the dual GbE LAN, 4 x serial ports, 4 x USB ports, make device connection and integration easy.

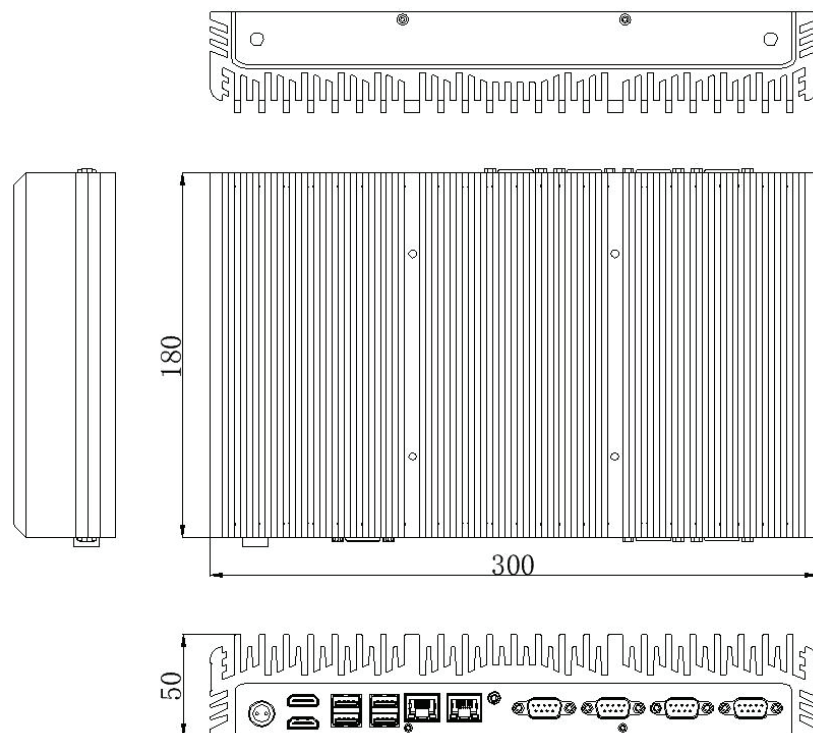
Specifications

Processor	CPU	Intel® 6th 7th Gen Celeron 3865U/Core i3 i5 i7
	Cooling System	Fanless
	Memory	4GB-16GB DDR4
Power	Storage	mSATA+ SATA 2.5" HDD 64GB
	I/O ports	USB: 4xUSB3.0, max 6 COM: 4xRS232 (RS485 optional), max 6 Dual Display: 2xHDMI Audio: 1x Line-out
	Network(LAN)	2x 10/100/1000Mbps Ethernet
OS Support	Input Voltage	12V DC(Aviation Connector) , optional 9V-36V DC
	OS Support	Microsoft Windows 7/ Windows 8/ Windows 10/ Linux
Environment	Operating Temperature	-10°C,60°C(14~ 140 °F)(extend temperature optional)
	Storage Temperature	-20°C,75°C(-4 ~ 167°F)(extend temperature optional)
Mechanical	Dimensions	300x180x50mm
	Weight	3.18KG
	Color	Black
	Material	High Strength Aluminum Alloy Front Panel
Custom Service	Dimensions	
	Custom Service	Custom BIOS, System Encryption, Custom LOGO

Pictures



Dimensions



Unit: mm

Packing List

- 1x IPC-805A
- 1x Driver CD
- 1x Power Adapter

Operating Systems

- WIN7 32bit 64bit ENG/CN
- WIN8 32bit 64bit ENG/CN
- WIN10 32bit 64bit ENG/CN

Ps: Default BIOS supports WIN7 32bit 64bit OS, WIN 8 & WIN 10 needs update BIOS.

Ordering Information

- IPC-805A-1: Core Version
- IPC-805A-2: Celeron Version

Optional accessories

- VESA Bracket
- Power Cable 2-pin 200cm