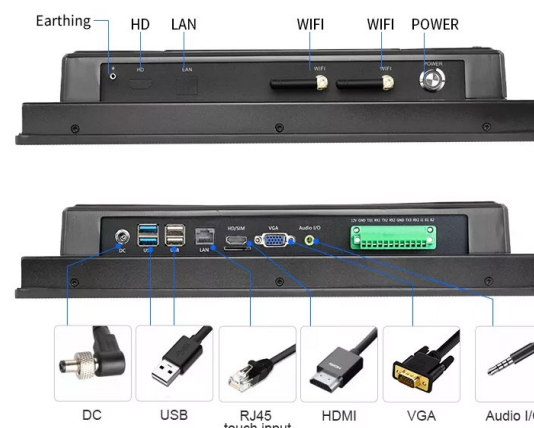
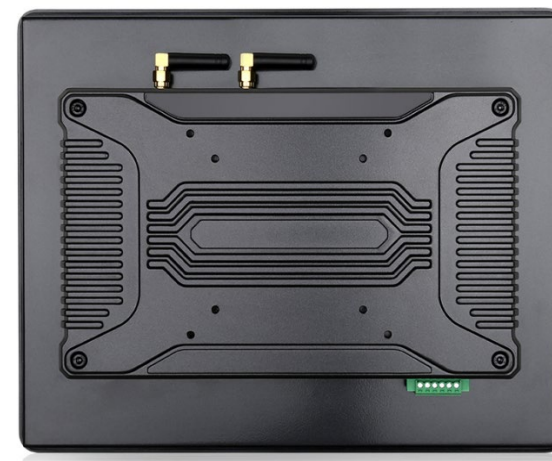


Size	10.1 "
Model name:	GTC101R1900X
Screen Touch type	10-point capacitive touchscreen, 5 wire resistive touchscreen and infrared touch optional
Panel Type	Industrial LCD panel A, A+grade
Aspect Ratio	16:09
Resolution	1280x800
Contrast	700::1
Luminance	300cd/m2 (can be customized for higher brightness)
Response time	6.5 ms
Active Area (mm)	135.36(H) X216.576(V) mm
Pixel Interval(mm)	0.1692(H) X 0.1692(V)
Display colors	16.7M(8-bit)
View angle	85/85/85/85 (L/R/U/D)
Case Material	Aluminum alloy
PC Configuration	
CPU	Intel® Celeron® Processor J1900, Quad-Core up to 2.0 GHz, Intel® Smart Cache 2 MB. Intel H81 Core i3 i5 i7 CPU optional
Graphic Card	Integrated Intel HD Graphics
Inner memory	4G DDR3 RAM (2G/8G RAM can be customized)
Storage	64G SSD (32G/128G/256G SSD, 500G HDD can be customized)
Expansion Card Slot	2xMini-PCIE slot, support SSD, WIFI, 3G module
Audio	Realtek ALG662 6 sound track audio frequency
Internet	1xRTL811E gigabit network card
Graphics card	integrate HD Graphic, Support DVMT, VGA, HDMI-compatible,LVDS. Built in dual channel 24bit LVDS,Support dual screen display.
Operating System	Windows 7/8.1/10, WES7-E/P, WE8S, Ubuntu 14.04
Support multi-language	English/Portuguese/French...etc
I/O Ports	USB*4, VGA*1, HDMI*1, RJ45*1, audio*1, DC*1 (support 12-36V), industrial interface (RS232*2, DC*1)
Functions	Support Auto power-on, remote wake up , automatic reset
3G module/4G module	PCI-E Standard interface
Power Input	AC 110-240V, 50/60Hz, 12V-36V -5A
Operation Temperature	-10°C-60°C
Storage Temperature	-30°C-70°C
Operation Humidity	10%--80%
Storage Humidity	10%-90%
Material	Aluminum alloy enclosure+High Strength Cold Rolled Steel
Bezel Thickness	7mm bezel
IP Rating	IP65 standard seamless front
Color	Black
Installation Methods	VESA, Embedded, Wall Mount, Desktop optional (Buyers buy by themselves)
Packaging	EPE+Carton (wooden crate for mass order)



Packaging process and packing list

For neutral packaging, contact customer service

